

# MONTHLY MEMBERSHIP PROGRESS REPORT

LOCATION MICHIGAN

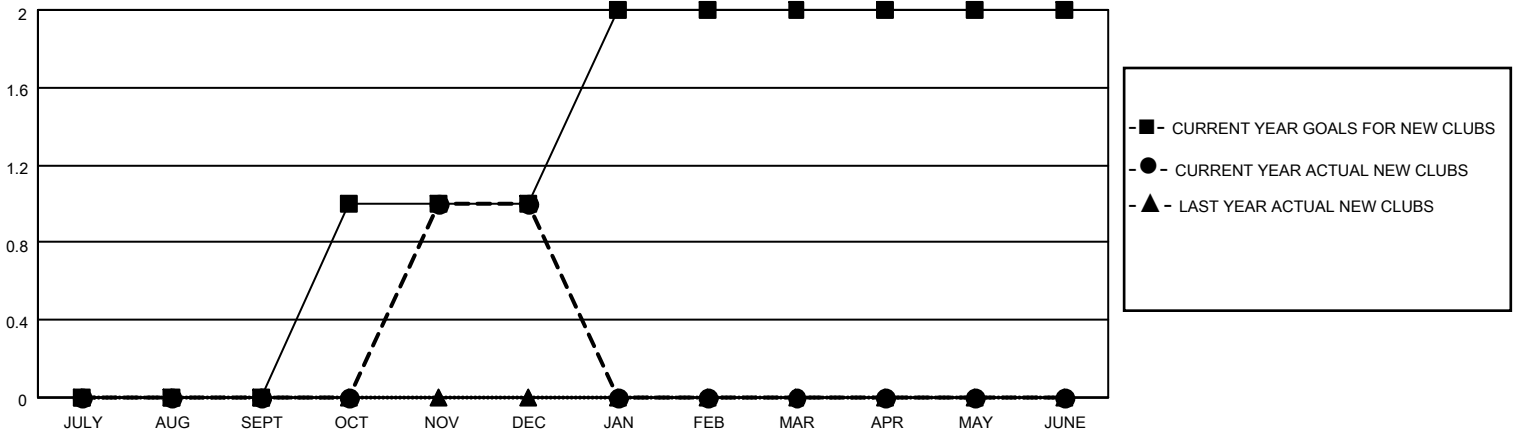
District 11 D2

Results as of: 12/31/2020

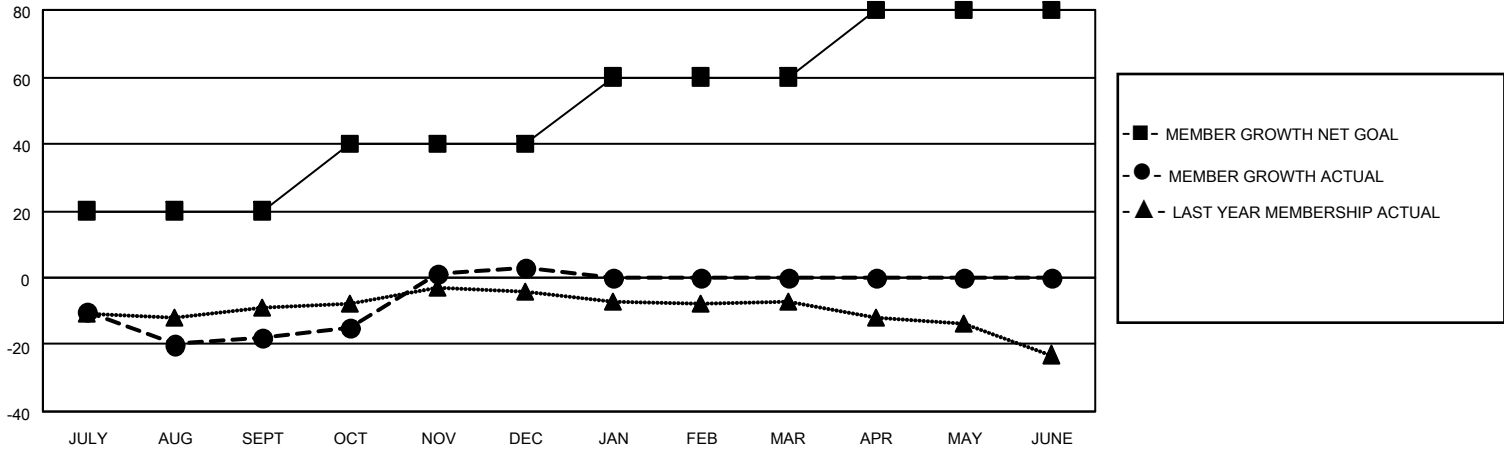
Clubs			
RESULTS FOR 2020-2021			
QUARTER	NEW CLUB GOAL	NEW CLUBS	DROPPED CLUBS
JULY/AUG/SEPT	0	0	0
OCT/NOV/DEC	1	1	0
JAN/FEB/MAR	1	0	0
APR/MAY/JUNE	0	0	0

Members			
RESULTS FOR 2020-2021			
QUARTER	MEMBER GROWTH NET GOAL	MEMBER GROWTH ACTUAL	DROPPED MEMBERS ACTUAL (including transfers)
JULY/AUG/SEPT	20	21	39
OCT/NOV/DEC	20	59	38
JAN/FEB/MAR	20	0	0
APR/MAY/JUNE	20	0	0

**GOALS AND ACTUAL NEW CLUBS CUMULATIVE**



**GOALS AND ACTUAL MEMBERS CUMULATIVE**



DROPPED CLUBS: 0	21 CLUBS OF 46 ADDED 1 OR MORE NEW MEMBERS	<u>GENDER DISTRIBUTION</u> MALE 946 (74.20%) FEMALE 329 (25.80%)
<u>DROPPED MEMBERS</u>	<a href="#">CLICK HERE FOR CUMULATIVE MEMBERSHIP DATA</a>	TOTAL FAMILY UNIT MEMBERS 244
DECEASED 10		FAMILY MEMBERS PAYING HALF DUES 127
CLUB CANCELLED 0		
OTHER 67		
<b>TOTAL 77</b>		